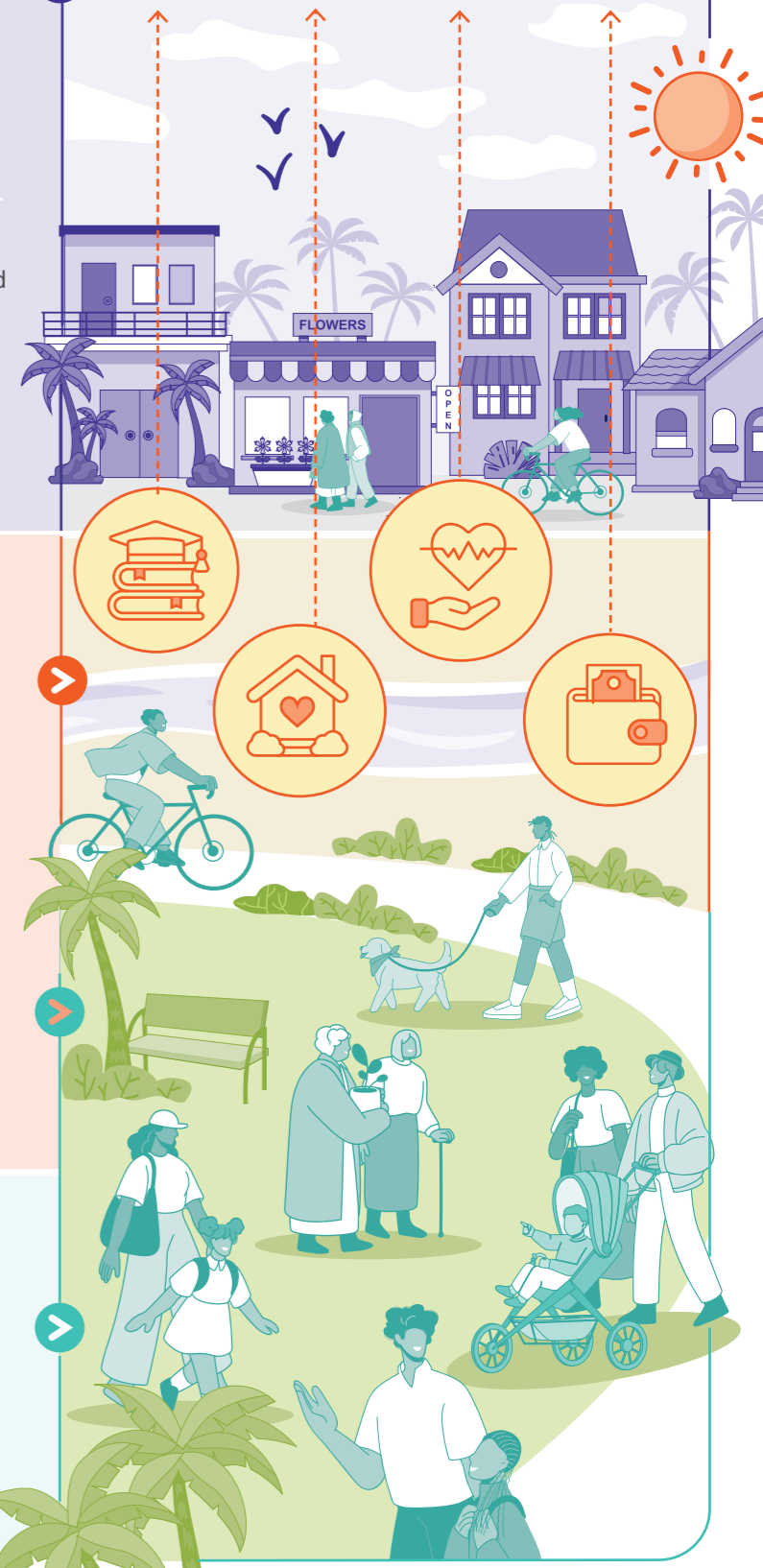


THEORY OF CHANGE

Coleman Park and its legacy residents experience elevated health and prosperity through social and economic development



TARGET OUTCOMES

10+ years

All residents experience upward economic mobility, community wealth-building, and long-term financial sustainability grounded in local ownership and opportunity

Residents live with dignity in safe, stable, and affordable homes, in a neighborhood that reflects the pride, resilience, and beauty of their shared culture

Coleman Park is a thriving, culturally rooted community where the heritage of Black legacy residents is preserved, celebrated, and interwoven into the neighborhood's development

LONG-TERM OUTCOMES

3-5+ years

Increased earning and financial sustainability in the community

Residents feel pride, ownership, and responsibility for their neighborhood

Coleman Park celebrates the rich cultural heritage of longtime and new residents, uplifting the Black heritage that shapes and strengthens the community.

Improved functionality and resilience of neighborhood infrastructure

Improved housing market: stable, affordable and equitable housing options

EARLY OUTCOMES

1-2 yrs

There are more local businesses started by residents that serve the Coleman Park community

Community members secure jobs with stable and livable wages.

Public spaces and housing projects include and reflect the community's culture and traditions in their design

The neighborhood infrastructure is improved with:

- More green spaces
- Shared areas
- Cleaner streets
- Safer transportation
- Stronger protection against natural disasters

Increase in quality housing options in Coleman Park for both renting and buying, with homes for people at different income levels

OUTPUTS

Tracked across the entire effort

Stores and business spaces are bought and improved to help the community

Residents and public entities collaborate to plan and implement neighborhood improvement and maintenance programs

Coleman Park community receives strategic and sustained investment in infrastructure, development, and community planning

Infrastructure development and planning for Coleman Park center the voices and values of the community, reflecting the culture, identity, and priorities of residents

New employment opportunities and career pathways are created for community residents

Affordable and accessible housing is built or repaired in the neighborhood, with a focus on benefiting the Coleman Park community

ACTIVITIES

Develop projects supported by the community, in collaboration with local businesses

Collaborate with residents and local stakeholders to sustain local culture and care for public spaces

Ensure sustainable investment through community ownership and the leadership of RISE Coleman Park



ECONOMIC VITALITY

HOUSING

HEALTH & WELLNESS EDUCATION

PLACE

PROGRAMS

PEOPLE

Barriers to remain in place are removed or reduced

Residents experience:

- Improved living conditions
- Improvements in their health and well-being

Children and teens:

- Are healthier
- Feel better
- Do better in school and development programs

Health, healing, and holistic wellbeing are accessible to all, fostering joy, safety, and care across generations

Community relations and trust are strengthened, and residents have a strong sense of solidarity, and belonging.

A spirit of unity, collaboration, and shared leadership drive equitable decision-making, long-term investment, and a collective vision for a just and flourishing Coleman Park

Increase in programs and policies that support residents and remove or reduce barriers to remain in place

Residents experience:

- Improved access to healthy food and health services
- Increased housing support and stability
- Decrease in caregiver/family related stress

More kids and teens participate in activities that help them:

- Grow up healthy
- Do better in school
- Feel good emotionally

The exterior of owner-occupied homes are rehabilitated

Residents have access to housing support services, including financial coaching, housing-related education, and assistance during housing-related crises

Wellness facilities and programs are created or strengthened in collaboration with the community to support the well-being of diverse community groups

Programs are put in place to help children and teens learn, feel good, and thrive in the community

Residents and local groups collaborate on projects that improve the community and celebrate and protect the culture of Coleman Park

Residents help plan and carry out projects to improve the community

Resident's needs are heard and directed towards policy change

RISE and cross-sector partners create and implement a pipeline of programs to support residents & holistic community development through:

- Economic Vitality
- Mixed-Income Housing
- Health & Wellness
- Cradle-to-College Education