

Quantum Foundation

The Quantum Foundation is driven by a vision to improve health outcomes and life opportunities for residents of Palm Beach County, particularly those in historically underinvested neighbourhoods. Through its venture philanthropy initiative, *Palm Beach Venture Philanthropy*, the Foundation is pioneering an approach that aligns capital, community leadership, and systemic change to address deep-rooted inequities. Their approach challenges traditional philanthropic models by prioritising inclusive, trust-based partnerships and long-term impact. Together, we are building a new paradigm for place-based transformation.



Sector
Venture
Philanthropy



Location
United States

The Challenge

At the outset of our work together, Quantam was launching their venture philanthropy model and had no baseline or structured framework for capturing impact or guiding systemic change. They needed support in structuring their venture philanthropy initiative, defining impact, and building the tools and frameworks necessary to drive and measure systemic change.

What We Contributed

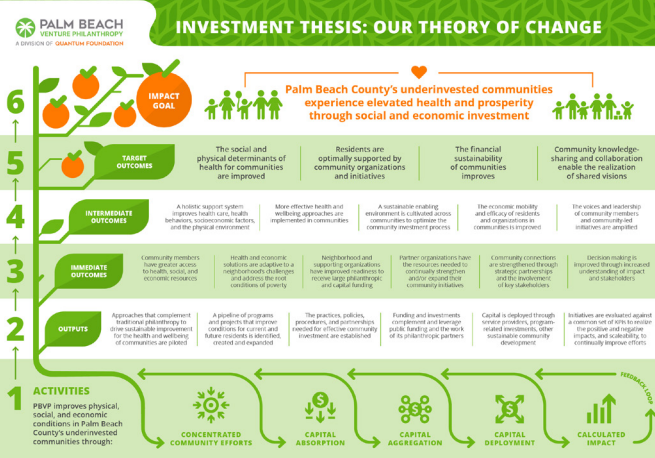
- > Theory of Change for Palm Beach Venture Philanthropy
- > Detailed Impact Measurement Framework
- > Stakeholder Mapping and Ecosystem Insights
- > Strategic advisory on integrating community voice and systemic outcomes
- > Frameworks to align partners and funders
- > Tools to communicate impact internally and externally, including a public-facing website and impact storytelling
- > Organisational capability building to track and manage impact over time
- > Guidance on inclusive, trust-based philanthropic practices

“We now know that all of these folks live in this ecosystem of hope... We don't have to stay at the centre of the things that are critical for transformation. Other partners are taking that same passion now and becoming bold about how we'll get it done.”

Eric Kelly, President – Quantam Foundation



PALM BEACH
VENTURE PHILANTHROPY
A DIVISION OF QUANTUM FOUNDATION



WILLIAM W. PRICE,
LAW OFFICES

Our Impact

Highlights from our journey together in conversation with Eric Kelly, President - Quantum Foundation and Camden Baggs, Managing Director - Quantum Foundation.

Building a New Approach to Philanthropy

Quantum Foundation’s journey with us began in 2023 as they sought to fundamentally shift how philanthropy operates in Palm Beach County’s historically underinvested neighbourhoods. We co-developed a venture philanthropy model that reimagines how capital, community, and collaboration intersect. Starting from a place of humility and curiosity, Quantum embraced a learning mindset, challenging long-held assumptions about philanthropy’s role in neighbourhoods.

Strategic Tools for Systemic Change

Through our partnership, Quantum gained clarity and confidence in their approach. The Theory of Change and Impact Measurement Framework became foundational tools, guiding decision-making and enabling transparent, data-informed storytelling. Stakeholder mapping illuminated the ecosystem of partners, helping Quantum to strategically engage and empower collaborators across sectors.

Community-Centred Transformation

At the heart of this work is a commitment to co-creation. Quantum has embedded inclusive practices that elevate resident voices and shift power dynamics. This has led to stronger partnerships across government, non-profits, and residents; increased trust, and tangible momentum in Coleman Park – the main community in which they work. Projects that once faced financial shortfalls are now moving forward through collective action and shared accountability.

Sustainable and Systemic Impact

Quantum’s evolving strategy now addresses systemic health more intentionally, focusing on social determinants of well-being through aligned investments and partnerships. The learnings from Coleman Park are influencing grant-making across the Foundation’s broader portfolio, setting the stage for sustainable, county-wide transformation.

Enabling, Catalysing & Amplifying Impact

“We've done two rounds of our stronger communities initiative, which is a proactive grant-making programme where we seek to fill gaps in social determinants of health ... We've been able to become more prescriptive with some of the indicators we would like to see our partners report on. Having the Theory of Change as a backup in our Impact Measurement Framework helps organisations understand their role in the greater work of what’s happening in the neighborhood.”

Thriving & Resilient Communities



“Momentum is definitely felt in the neighbourhood... I think people feel differently about what's happening in their neighbourhood in the future than they did, let's say 12, 18 months ago.”

Synergistic & Healthy Environments



“It’s a process to drive transformative change in neighbourhoods and we need to be in lockstep with one another. A foundation alone can't come into a neighbourhood and transform it in an equitable manner for those that live there. It takes all of the players that are around the neighbourhood. It's many of the institutions that even created some of the deficits or challenges in the neighbourhood ... every stakeholder has a role to play.”

Learning, Responsible Organisations Maximising Positive Social & Environmental Impact

“We're better at starting from the position of ‘we just simply may not know’... Our learning began at baseline zero... Now we are incredibly intentional about defining impact, scripting indicators, and working with residents to ensure we are capturing what truly matters.”

