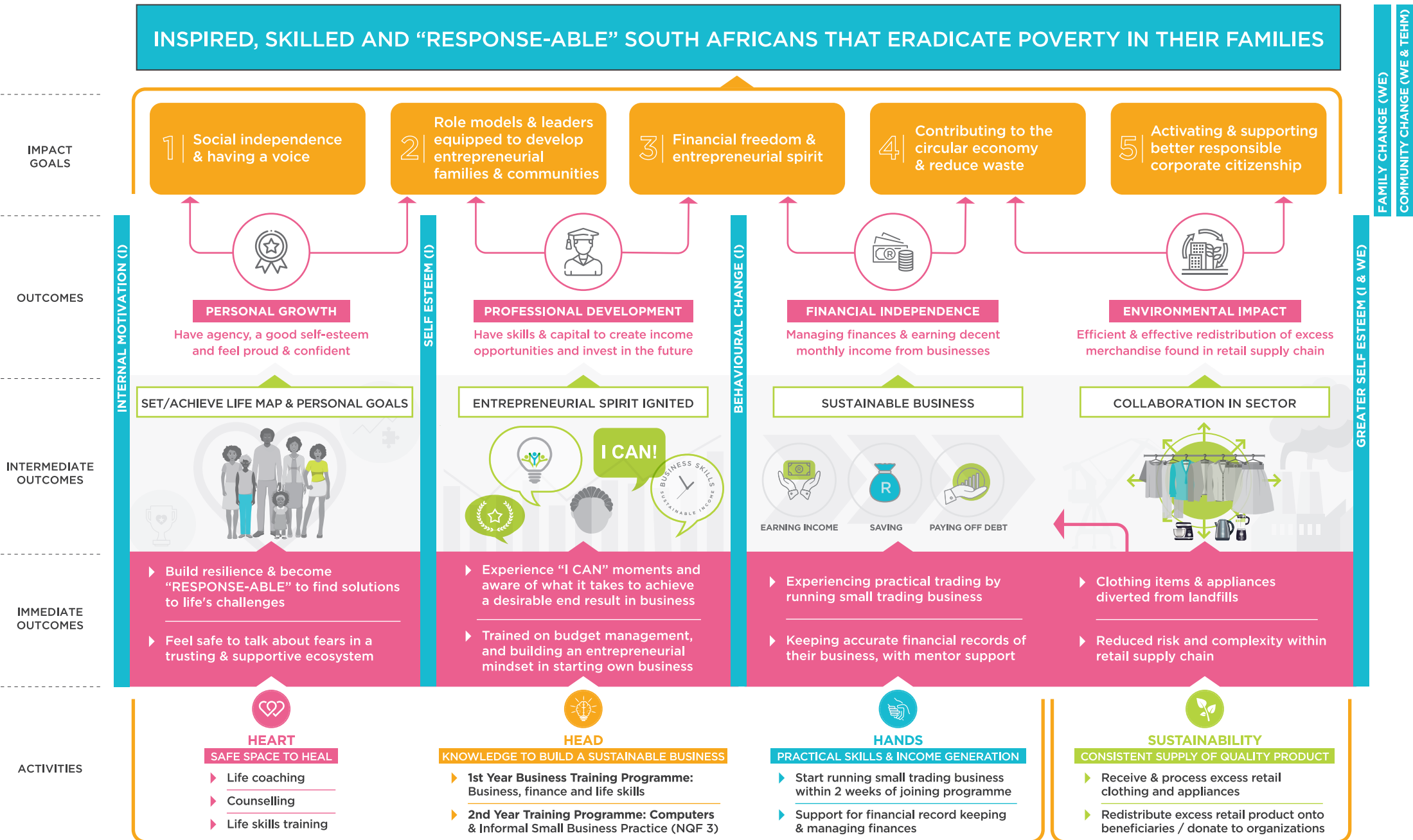


# THEORY OF CHANGE: THE CLOTHING BANK & THE APPLIANCE BANK

BREAKING THE CYCLE OF POVERTY IS MULTI-DIMENSIONAL



FAMILY CHANGE (WE)  
COMMUNITY CHANGE (WE & TEHM)

GREATER SELF ESTEEM (I & WE)

Recruit unemployed men and women into a holistic programme, which works in 3 dimensions: **HEART, HEAD & HANDS**

Create aspirational self-employment opportunities